



Justice & mercy  
INTERNATIONAL



2024  
*Annual Report*



“He has told you, O man, what is good; and what does the Lord require of you but to do justice, and to love kindness, and to walk humbly with your God?”

*Micah 6:8*

## A letter from our CEO and Board President

As we step into 2025, we want to take a moment to thank you—our partners. Your faithful support and prayers have truly been the foundation of everything we’ve accomplished together. Thanks to your generosity, we’ve been able to bring hope, healing, and the love of Christ to so many through child sponsorship programs, pastors’ conferences, mission trips, and crisis support efforts.

Looking back on 2024, we’re in awe of what God has done through this ministry and your partnership. Together, we’ve reached incredible milestones: expanding programs to underserved areas, serving over 2,500 children at our summer camps, establishing new international headquarters in Brazil and Moldova, growing to three Jungle Pastors’ Conferences in the Amazon, and welcoming a new National Director in Moldova. These successes wouldn’t have been possible without the passion and resilience of our amazing staff and leadership team, who live out God’s call with dedication every day.

Of course, 2024 came with its share of challenges. Rising inflation and economic uncertainties tested us all, but time and again, we saw God’s provision. Your steadfast commitment allowed us to keep going—to meet needs, overcome obstacles, and share Christ’s love in tangible, life-changing ways. These moments remind us of the power of faith and unity when we work together.

Moving forward, we’re filled with hope and anticipation for what’s to come. This year, we’re focusing on expanding Gospel-centered outreach to unreached communities in the western Amazon, growing our Transitional Living program for vulnerable teens in Moldova, continuing to support those affected by war and natural disasters, and creating a comprehensive evangelism strategy to impact Brazil, Moldova, and Italy. And as always, we’re committed to building lasting partnerships with local churches in every region we serve.

Thank you for walking alongside us. Your prayers, support, and belief in this mission inspire everything we do. Together, we will continue to shine the light of Christ in the communities we serve.

With gratitude and blessings,

Mary Katharine Hunt

Chief Executive Officer  
Justice & Mercy International

Jeff Simmons

President of the Board  
Justice & Mercy International

“Defend the weak and the fatherless;  
uphold the cause of the poor and the oppressed.”  
*Psalms 82:3*

# WHO IS JMI?

## *Our Mission:*

We exist to promote Gospel-centered life change for the poor, the vulnerable, and the forgotten.

## *Our Vision:*

We envision a day when justice has truly been made personal—when every child is protected, every family is cared for, every pastor is equipped, and the Good News of Jesus has been taken to the ends of the Earth.



# OUR WORK

## *Human Trafficking Prevention*

We care for and support vulnerable children and teens, effectively preventing the risk of trafficking and ensuring they have the opportunity to hear the Good News of Jesus' love for them.

## *Crisis & Family Care*

We care for and support marginalized and forgotten people in times of crisis or great need.

## *Pastoral Training & Equipping*

We invest in training and equipping indigenous leaders because they bring about global change and take the Gospel to places it has yet to penetrate.

## *Church Mobilization*

We mobilize churches to fulfill the Great Commission and reach the least-reached populations of the world.

# HUMAN TRAFFICKING PREVENTION VULNERABLE CHILD & TEEN CARE

Moldova, situated in Eastern Europe, is a small, poor country that has become a hub for trafficking. In the Amazon, children, teens, and women are abused and trafficked every day. Statistics show that many of those who are trafficked do not have a stable family or home environment.

JMI works to prevent trafficking by reducing vulnerability and lowering the risk of exploitation. Since children and teens are most at risk, JMI intervenes during this critical stage, providing care and protection. As a result, many young lives have been safeguarded from harm, preventing them from becoming trafficking statistics.

*In 2024, we had...*



**1,222** sponsored children and teens



**2,512** children attend JMI summer camps



**18** Transitional Living program graduates



**60** participants in our Transitional Living and Independent Living programs

## Dumitru: Transforming Adversity into Hope

Dumitru, a bright and determined teenager, has found hope and purpose through JMI's Transitional Living Program. However, life hasn't been easy for him. After spending a decade in an orphanage from the age of four, he transitioned to living with a foster family. Like so many young people who have grown up in vulnerable circumstances, Dumitru needed guidance, stability, and support as he prepared for adulthood.

That's where the Boys2Leaders house became a turning point for him.

"For me, the Boys2Leaders house is a gift from God, where we study many things. We study the Bible, we learn how to cook meals, we grow here, and we learn how to communicate and how to develop properly in life," Dumitru says.

Known for his respectful and helpful demeanor, Dumitru has also shown dedication as a student and is actively preparing for his future career. This past summer was particularly special for him. He celebrated his 17th birthday and chose to be baptized alongside several other teens in the Transitional Living program. It was a powerful moment, symbolizing the hope and new beginnings that this program helps provide.

The Transitional Living Program plays a critical role in preventing human trafficking in Moldova, a country where vulnerable teens are often at high risk. By offering at-risk teens like Dumitru a safe home, educational opportunities, spiritual guidance, and practical life skills, JMI equips them with the tools they need to build independent and successful lives. In addition to Bible studies, participants meet with social workers, take English and computer classes, and learn skills like cooking and financial literacy. These resources not only empower them but also shield them from exploitation, providing a protective foundation that helps them break free from cycles of vulnerability.

In the Transitional Living program, Dumitru is not just learning practical skills and spiritual truths; he's discovering his potential and building a foundation for a brighter, safer future.



# CRISIS & FAMILY CARE

Treacherous conditions, harsh climates, war, lack of education, and limited access to medical care can present huge challenges for families in the Amazon and Moldova. When a crisis hits those we serve, JMI is ready to respond. We meet the critical needs of the poor, vulnerable, and forgotten through food, medical, and hygiene supplies as they face regional, national, and global crises.

Whether it's a family we are serving in the Amazon who lost everything to flooding or one in Moldova who can't afford heat for the winter, **our team is committed to meeting their essential needs while sharing the love of Christ.**

*In 2024 we...*



Supplied **679,014** meals



Treated **1,573** people in health clinics



Provided **35,772** hygiene supplies



Distributed **13,065** shoes + clothes

## Bringing Hope to Families in Crisis: The Popa Family



For families living in extreme poverty, the burden of providing for their children can be overwhelming. This is the reality for the Popa family in Moldova. With five children living in a small dorm room, every day presents a new challenge. Their mother, Nadejda, is on maternity leave, and their father, Dumitru, has been unable to work since undergoing surgery following a stroke. With no stable income and limited space, the family struggles to afford even the most basic necessities, sharing a kitchen and bathroom with six other families.

Through JMI's Priority Needs program, families like the Popas receive critical support in times of crisis. Monthly food and hygiene packages ease their struggle, providing staples such as rice, beans, flour, and oil—essentials that make a tangible difference in their daily lives. But beyond their physical needs being met, the Popas have found something even greater: hope.

When JMI provided the family with a Bible, Nadejda began reading it to her children every night. Now, she and her family are eager to learn more about God. This simple yet profound moment reflects the heart of JMI's mission—not only to meet urgent needs but to bring lasting hope and transformation.

Thanks to the generosity of our supporters, the Priority Needs program continues to lift burdens for families like the Popas, offering them stability in times of crisis. As we look ahead, we remain committed to providing not only food and essentials but also the love of Christ, which sustains far beyond material provision.

# PASTORAL TRAINING & EQUIPPING

Our Jungle Pastors' Conferences are the centerpiece of all the work we do in the Amazon, and by God's grace, we plan to expand these conferences to Moldova and Italy. We believe that local leaders can bring about change. This is why we invest in training and equipping indigenous pastors and their wives.

Through our conferences, pastors receive biblical and practical training that will help them disciple the people in their church and run an effective ministry in the most remote and difficult settings. **Through these faithful men and women, God is reaching the ends of the Earth.**

*In 2024 we...*



Welcomed **256** pastors' conference attendees



Equipped **344** pastors



Reached **244** villages in the Amazon

## Pastor Rildo: A Legacy of Ministry in the Amazon

Pastor Rildo de Gentil França has dedicated over 43 years to spreading the Gospel in the Amazon region, serving indigenous and riverside communities with deep faith and humility. As the pastor of Ebenezer Baptist Church in Nova Linha do Norte, he ministers alongside his wife, Cleomar, and their three children, carrying out God's calling with a servant's heart.

"My desire is to expand the Gospel here in Amazonas, reaching indigenous and riverside communities with the love of Christ," Pastor Rildo shares. Raised in a Christian family and inspired by his grandparents' missionary work, he accepted Jesus as a child and felt God's call to ministry at age 14. Since then, his commitment has only deepened. Today, his work exemplifies a life of obedience, gratitude, and trust in God's provision.

Ministering in the Amazon is not without its challenges. Transportation to remote areas is difficult, especially during dry seasons. Yet, Pastor Rildo's faith remains steadfast. "A local man once offered us his boat when no other options were available. It was a clear sign of God's hand at work," he recalls. During the COVID-19 pandemic, he faced government restrictions while delivering food and hygiene supplies. Through prayer and perseverance, he was granted passage, ensuring help reached those in need.

Reflecting on the past year, Pastor Rildo says, "We are grateful to God, our Father, for 2024. The year was full of challenges, but the Lord provided solutions. Therefore, we will continue serving and obeying His Word because our salvation lies in gratitude."

Pastor Rildo's ministry extends to eight indigenous communities, where he meets with believers under open skies or on soccer fields. His approach is rooted in relationship-building: "The indigenous people want someone who will live life with them—fishing, hunting, and working in the fields," he explains. This deep connection has allowed him to introduce communal worship and discipleship, with several individuals accepting Christ.

JMI's support has been instrumental to Pastor Rildo's ministry. Through our Jungle Pastors' Conferences and the Multipliers program, he has received vital training, resources, and encouragement to continue his mission. These programs empower pastors like Rildo to strengthen their ministries and expand their reach in remote areas.



# CHURCH MOBILIZATION

JMI mobilizes U.S. and Brazilian churches to go and serve the precious people we work with worldwide. We provide unique trip opportunities for churches to make long-lasting, life-giving relationships in underprivileged areas.

When you join a trip with JMI, you'll be actively engaged in serving alongside our team on the ground from the moment you arrive. From day camps to home visits, you will serve as the hands and feet of the global church alongside the local churches we partner with to carry out our day-to-day programming.

*In 2024 we...*



Had **660** trip attendees



Sent **14** US mission teams



Mobilized **315** volunteers

## Helping Indigenous Churches Step Into Missions



For many indigenous churches deep in the Amazon, the idea of going on a mission trip seemed out of reach. Limited resources, remote locations, and the belief that missions were for outsiders kept them from seeing themselves as senders and goers. But in 2021, that mindset began to change.

That year, the *Discovery*, JMI's ministry boat, embarked on its first Jungle Church mission trip, carrying 23 Indigenous church members. The team's destination was a remote river community where families lived in isolation and had little access to spiritual or practical support. Many on the team had never imagined themselves as missionaries, but as they packed supplies, led Bible studies, and prayed with the families they met, they realized something powerful: they did have something profound to offer.

JMI provided the boat, fuel, and logistical support to make this trip possible—but the local church stepped up in a remarkable way. Though their resources were limited, Pastor Rildo's congregation gave sacrificially, contributing 400 liters of diesel, 4 kilos of fresh pirarucu (fish), a box of chicken, and 8 kilos of flour to help sustain the team on their journey. Their generosity testified to God's provision, showing that mission work isn't for those with abundance but for those willing to trust God with what they have.

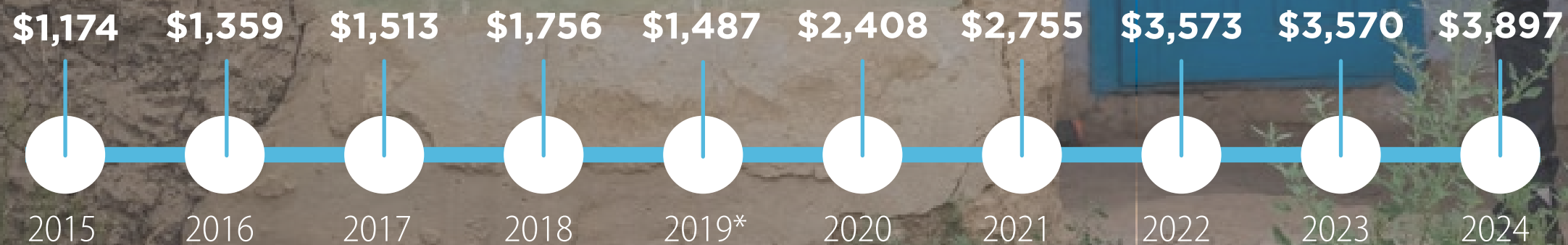
The trip was a turning point, not just for those they served but for those who went. "They know now that everything is possible for anyone who believes," wrote JMI's Amazon team member Neia Lucena. "No one is so poor that they cannot give, and no one is so rich that they cannot receive."

Since that first trip, *The Discovery* has become a lifeline for Jungle Churches, allowing indigenous congregations to take the Gospel even deeper into the rainforest. With JMI's support, these local believers are now leading the way, proving that God calls and equips His people from every background.

What began as a single journey is now a multiplying effort. As more indigenous churches step forward in faith, *The Discovery* continues to carry them farther, bringing the light of Christ to the most remote corners of the Amazon.

# FINANCIAL SUMMARY

**Total Revenue:** \$'s in 000's

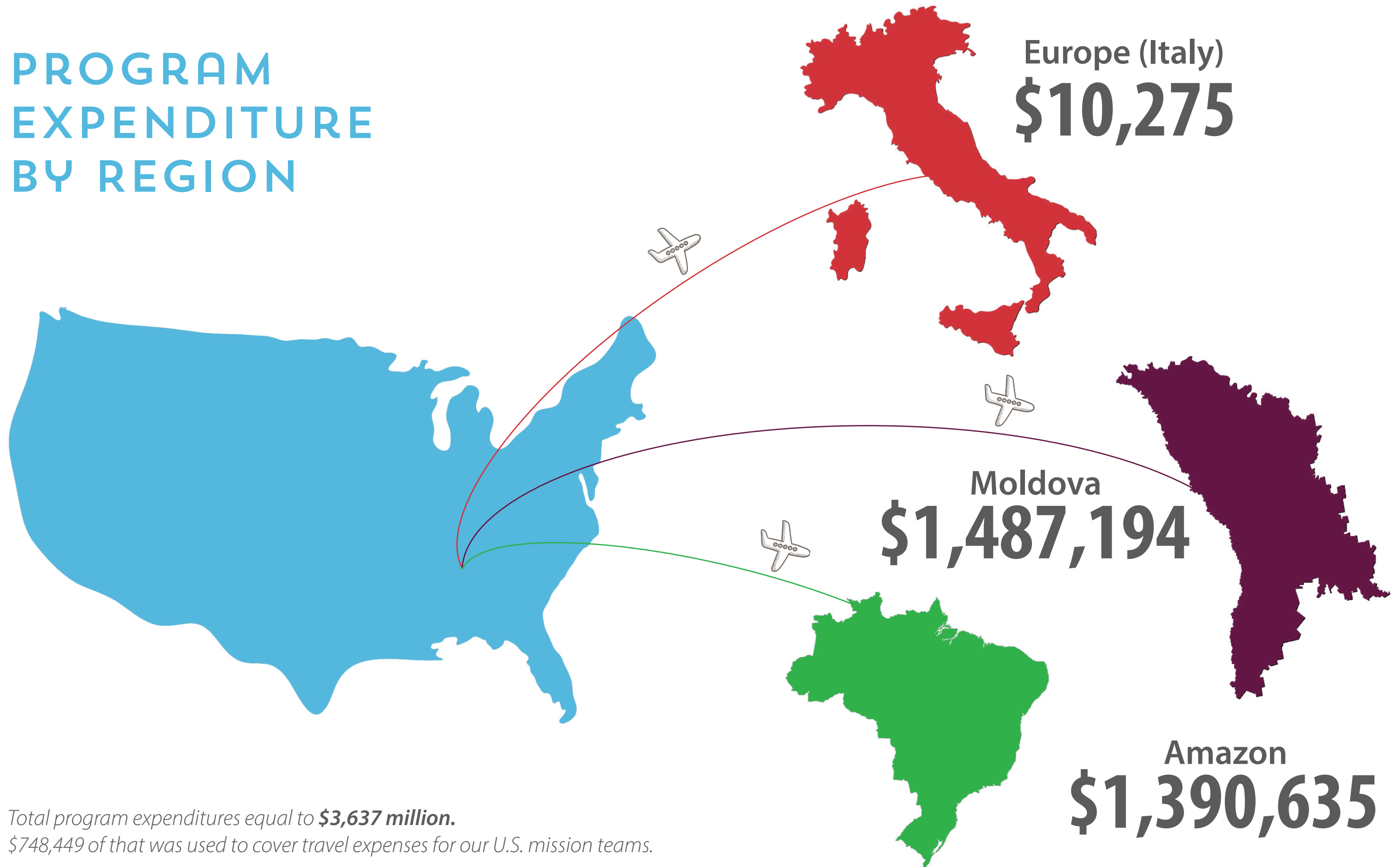


*Audited fiscal year 2024 data (JMI's fiscal year runs from July 1 - June 30).*

*\*2019 was a 9 month year to adjust to a new fiscal year end*

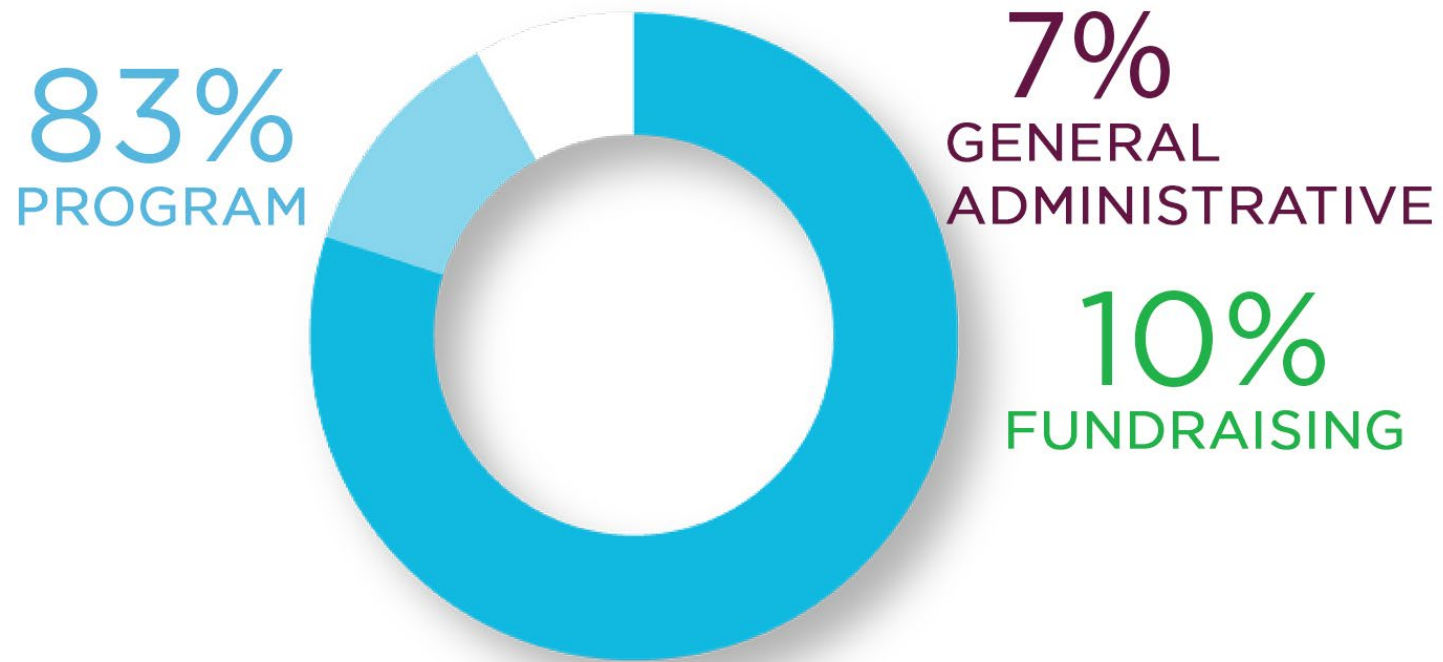


# PROGRAM EXPENDITURE BY REGION



Total program expenditures equal to **\$3,637 million**.  
\$748,449 of that was used to cover travel expenses for our U.S. mission teams.

# An Organization You Can Trust



In 2023-2024, 83% of JMI's total operating expenses were used for programs that benefit children, families, and communities in need.



## GLOBAL IMPACT

**4,267**

people impacted by the Gospel



**15,972**

people impacted through JMI's work

**286**

villages reached across the globe



# Connect With Us



**MARY KATHARINE HUNT**  
CHIEF EXECUTIVE OFFICER  
mkhunt@justiceandmercy.org



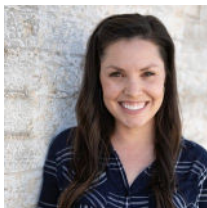
**CHRIS HARDY**  
CHIEF PROGRAM OFFICER  
chris.hardy@justiceandmercy.org



**TARA OWEN**  
CHIEF FINANCIAL OFFICER  
tara.owen@justiceandmercy.org



**LUCY MHONDERA**  
COMMUNICATIONS & DEVELOPMENT DIRECTOR  
lucy.mhondera@justiceandmercy.org



**KARI BIDWELL**  
MOBILIZATION & EVENTS SENIOR MANAGER  
kari.bidwell@justiceandmercy.org



**KELLY COX**  
SPONSORSHIP MANAGER  
kelly.cox@justiceandmercy.org



**SARA TURNER**  
OPERATIONS MANAGER  
sara.turner@justiceandmercy.org

---

**EMAIL:** [info@justiceandmercy.org](mailto:info@justiceandmercy.org)

**OFFICE:** 615-472-7455

**WEBSITE:** [justiceandmercy.org](http://justiceandmercy.org)

---